



About organization units

**Training Title: DHIS2 core configuration and data management training
for national technical team**

Date: 15th – 17th July, 2018

Training Venue: HSS Conference Hall, Mohakhali, Dhaka

Fatema Uddin

Deputy Team Leader

Support to the National HMIS

MIS, Director General of Health Service

Ministry of Health and Family Welfare

HISP Bangladesh



UiO : University of Oslo



Organization unite in DHIS2

Administrative boundary:
Country, Division, District,
Upazila, Union, Word.

Facility: Medical college
hospital, District hospital,
Upazila health complex,
union sub center,
community clinic

Administrative office: Civil
surgeon offices, Divisional
office, MIS office

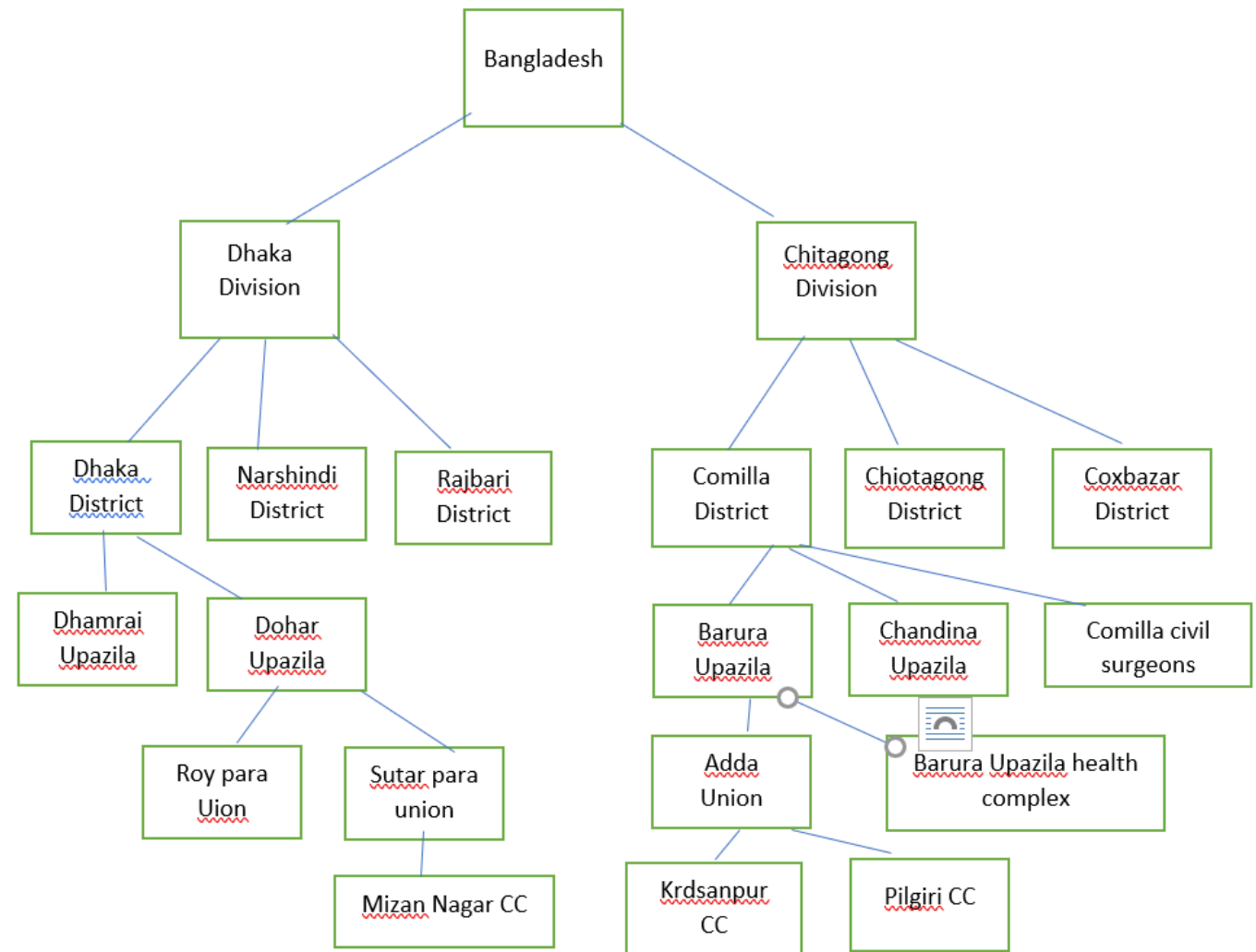
Private Facility and NGOs

Any area or service center

About organization units and hierarchy

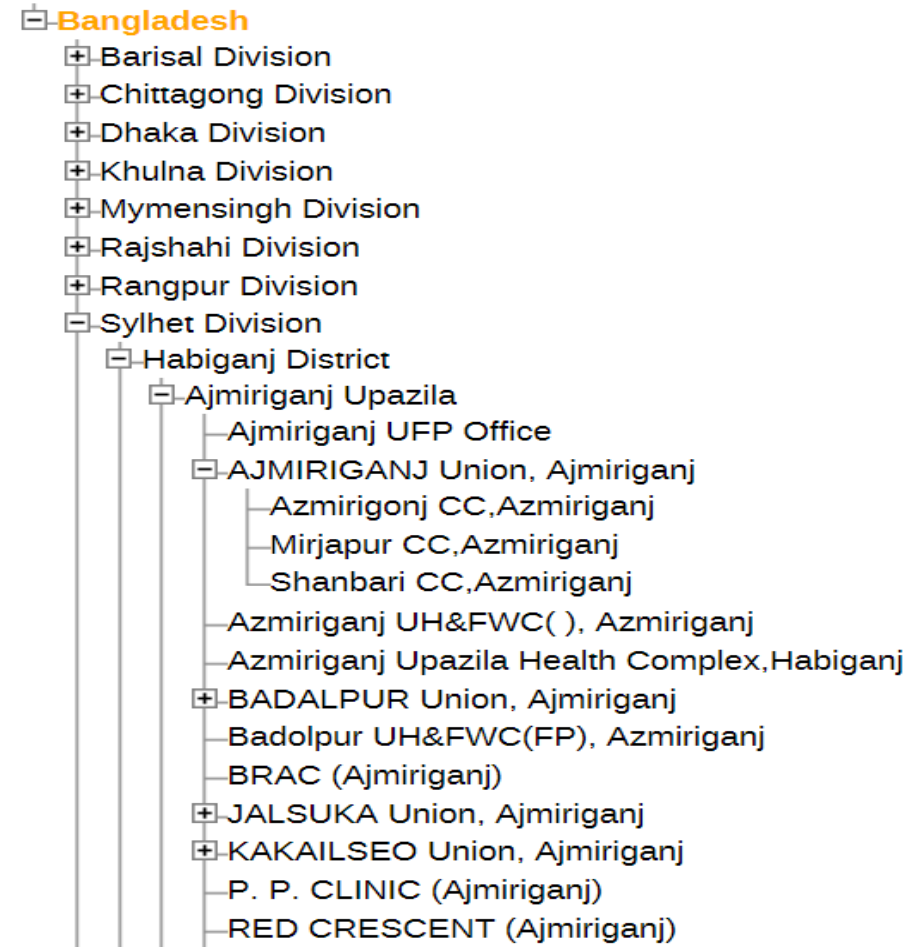
The organisation unit hierarchy defines the organisation structure of DHIS2

Health facilities, administrative areas and other geographical areas are arranged with respect to each other



How to set Organisation hierarchy in a tree

- DHIS2 system can have one organisation hierarchy at the same time.
- But it can have any number of levels in a hierarchy.
- National organisation hierarchies in public health have four to six levels around the world.
- We have six level till Community clinic
- Seventh level are ward and NGO supported outreach facilities available in some project areas



Child and Parent Relationship in Organization unit

- The organization unit hierarchy is the main vehicle for data aggregation on the geographical dimension
- The hierarchy is built up of parent-child relations, e.g. a Country or (the root) might have e.g. 8 child units (division), and each division again (at level 2) might have 4-13 districts as their children.
- Normally the health facilities will be located at the lowest level, but they can also be located at higher levels, e.g. national or regional hospitals, medical colleges. So skewed organizational trees are supported (e.g. a leaf node can be positioned at level 2 while most other leaf nodes are at level 5).

Changing the organisation unit hierarchy

- Opportunity to change the organisation unit hierarchy after created it, even organisation units that collect data.
- However, DHIS2 always uses the latest hierarchy for data aggregation
- Changed the hierarchy, loose the temporal representation of the hierarchy across time. As we can't get data of Mymensing District under Dhaka division even for the period(s) before the division divided.

Changing the organisation unit hierarchy in DHIS2 (elaborated in practical session)

The screenshot displays the 'Hierarchy operations' interface in DHIS2. On the left is a navigation menu with the following items: 'Organisation unit', 'Organisation unit group', 'Organisation unit group set', 'Organisation unit level', and 'Hierarchy operations' (which is highlighted in blue). The main area is titled 'Hierarchy operations' and contains two search boxes, each with a 'Search' label and a search bar. Both search boxes show a tree structure for Bangladesh with the following divisions: Barisal Division, Chittagong Division, Dhaka Division, Khulna Division, Mymensingh Division, Rajshahi Division, Rangpur Division, Sylhet Division, and X organizationunits for delete. Below the search boxes are two instruction boxes: 'Move' with the text 'Select organisation unit(s) to move from the left' and 'New parent' with the text 'Select new parent for organisation unit(s) from the right tree'.

Organisation unit

Organisation unit group

Organisation unit group set

Organisation unit level

Hierarchy operations

Hierarchy operations

Search

- ▾ Bangladesh
 - Barisal Division
 - Chittagong Division
 - Dhaka Division
 - Khulna Division
 - Mymensingh Division
 - Rajshahi Division
 - Rangpur Division
 - Sylhet Division
 - X organizationunits for delete

Search

- ▾ Bangladesh
 - Barisal Division
 - Chittagong Division
 - Dhaka Division
 - Khulna Division
 - Mymensingh Division
 - Rajshahi Division
 - Rangpur Division
 - Sylhet Division
 - X organizationunits for delete

Move

Select organisation unit(s) to move from the left

New parent

Select new parent for organisation unit(s) from the right tree

Opening and Closing date

- Every organization must have a opening date and might have a closing date
- An opening date and closing date have a relation with availability of dataset for data entry
- The opening dates control which organisation units that existed at a point in time, for example when analyzing historical data.
- Opening date should be given from when the facility is functioning
- Closing dates is used for abolished organization units
- Do not change opening and closing date while there are data/completeness/enrollment outside the functioning date range

Coordinates for facility and administrative units

- For a facility Latitude and Longitude are the coordinates
- Facility coordinate are points although it have a defined boundary
- Used for GIS mapping buffering, with different symbols, colors and size of dots
- Always use coordinate with decimal degree; do not use degree minute and second.
 - 23.2345, 90.1247 is correct
 - 23° 44' 23.7" is wrong

Coordinate for administrative boundary

- Any boundary are polygon layers in GIS
- Boundaries are combination of coordinated in a defined manner (shape file, GML, KML, KMZ etc.)
- Keep the coordinate field blank in case of administrative boundary (district, upazila, union, ward)
- Send specific mouza or village names for boundary which you feel incorrect in DHIS2 boundary layers, cntral MIS will solve by themselfe or communicate with LGED/vendor for getting the polygon

Contact Person

- Usually the facility head or contact person for the organization unit (e.g., information officer)
- Phone number of the facility: although a number of facility have land telephone but it is better to allocate a mobile number here as it have a relationship with SMS notification
- Email: organizational email as notification recipient

Other fields in Organization unit

- Name and short name: Every facility need to have a long name and a short name. This will be further elaborated in next session
- Code: we are using facility registry code for facility and administrative area code from BBS will be discussed further in next session
- In the **URL** field is a link to an external web site that has additional information about the organisation unit. (e.g., website of a hospital, Facebook ID etc.)
- Comments: it has no application in analysis, for more detail we keep some information here. (e.g., destroyed by river erosion)

Organization unit group

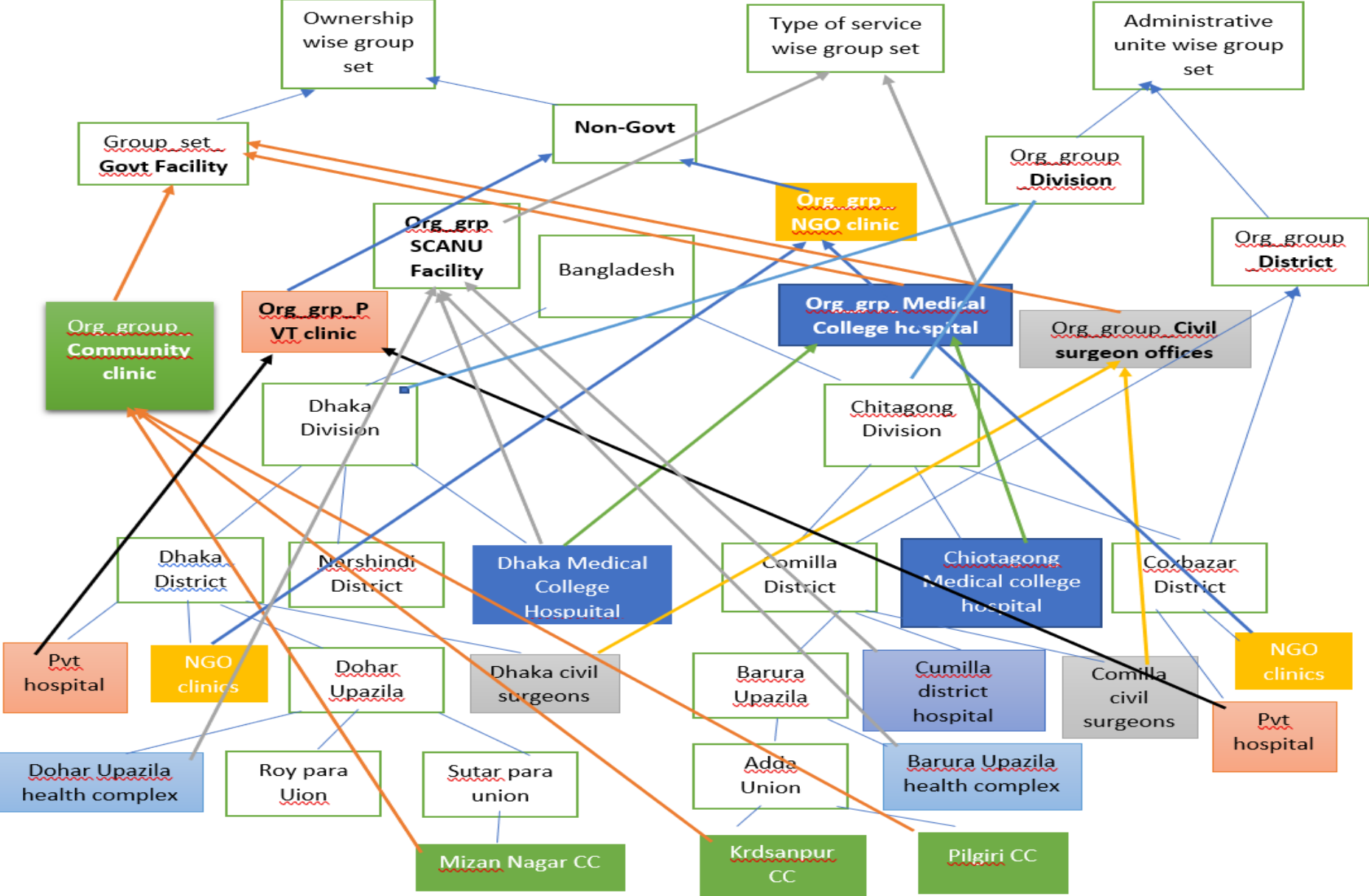
- Group of same service wise organization unite or parallel organization boundary together make a group
- For example:
 - District group (All District)
 - SCANU group (All scanu service providing facilities)
 - Private clinic group (All private hospitals)
 - EmOC Center (All EmOC service provider group)
 - etc.

Organization unit group set

- Base on ownership, type of facility, administrative unite. Several group together create Organization group set
- For example:
 - All Private clinic/hospital group and NGOs- Non govt group set
 - All Govt Facilities (Upzilla health complex, District hospitals, TB hospital) – Public group setetc.

Note: see the details next page in a Images

Organization unit group, group set (Ownership and type)



Organisation groups and organisation group sets.

Roles of creating Organization group and set:

- An organisation unit can only be a member of a single organisation unit group within an organisation unit group set.
- An organisation unit group can be part of multiple organisation unit group sets.
- Why Group and group set:
- Possible to create additional classifications by using organisation groups and organisation group sets.
 - For example to create parallel administrative boundaries to the health care sector.
- It is recommended to use organisation unit groups to create a non-geographical hierarchy.

Organization unit code

- Organization unit codes are important for interoperability and standardization between systems
- Facility codes should be match exactly with facility registry
- Administrative are codes are taken from BBS code for interoperability with other government institutes

Organization unit naming convention

- All upazila health complex
 - Name: Upazila Health Complex
 - Short Name: UHC
- District hospital/Sadar Hospital
 - As same as given
 - If there is no name given, **District Hospital** and **DH** can be used as name and short name
- USC name should be UH&FWC (H), UH&FWC (FP), UH&FWC (H&FP) respectively
 - Decided with Dr. Samir sir when he was in charge of MIS DGHS

Organization unit naming convention

- Medical College and Medical College Hospital should be separate organization
- Private Hospital name should be as per registration document
- Community Clinic name should be '..... CC - Upazila'
- Any confusion need to be addressed by MIS-DGHS

Organization unit naming convention

- Any area name should be as per BBS naming
- Spelling of names used by BBS is as per Bangla academy guideline
- Person names should be as same as original
- Some common names-
 - Dakshin
 - Paschim
 - Uttar
 - Purba
 - Chhota
 - Bara
 - Char
 - Nagar
 - Paurashava
 - Sadar
 - Ganj (often use in same word)

Thanks a
lot

- Be careful on creation/editing
- Always refer to facility registry
- Any confusion please inform MIS DGHS